



The English Indices of Deprivation 2019 (IoD2019)

The Indices relatively rank each small area in England from most deprived to least deprived

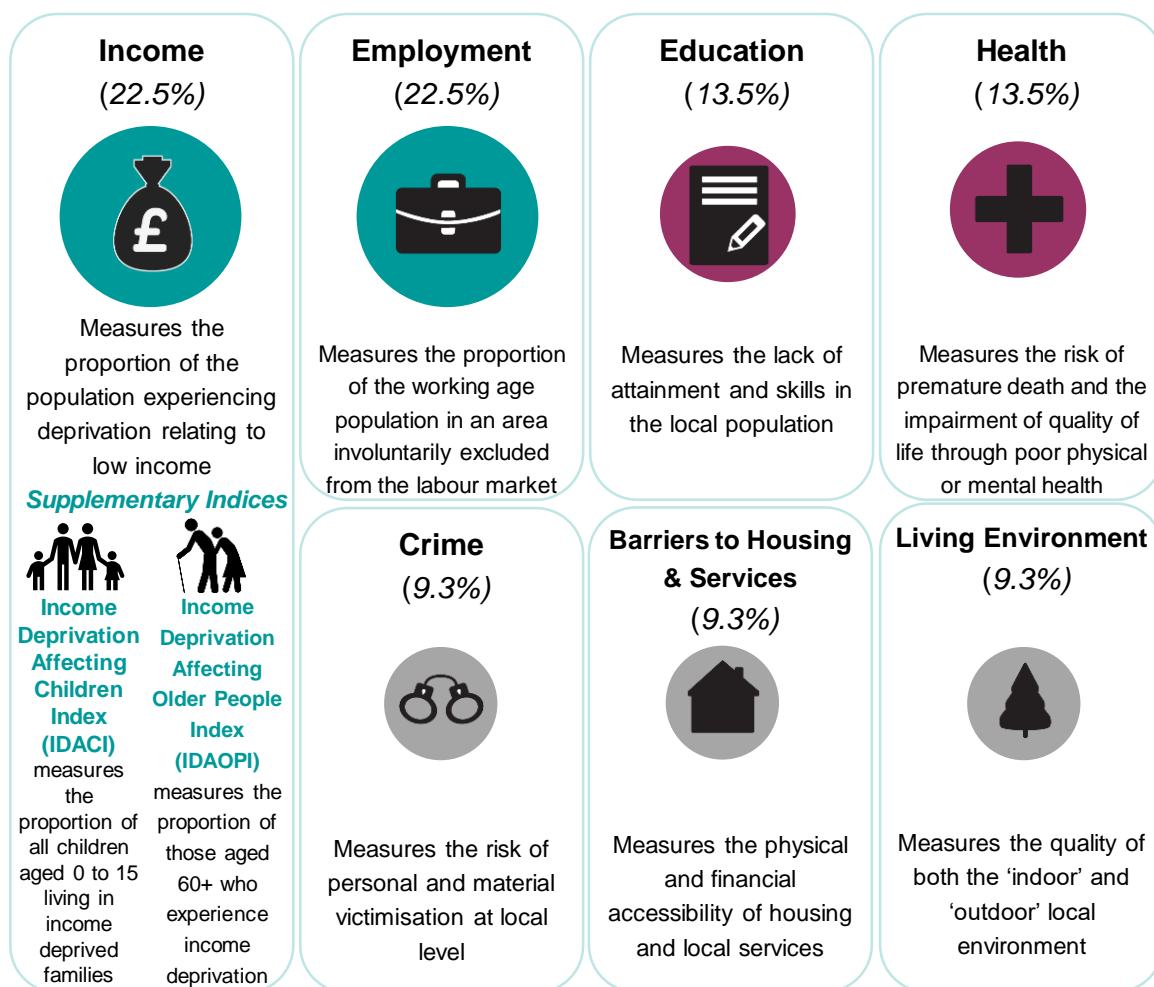
**1st
most
deprived
area**



There are 32,844 small areas (Lower-layer Super Output Areas) in England, with an average population of 1,500

**32,844th
least
deprived
area**

There are 7 domains of deprivation, which combine to create the Index of Multiple Deprivation (IMD2019):



How can the IoD2019 be used?



- | | |
|-----------------------------------------------------------------------------------------|------------------------------------------------------|
| ✓ comparing small areas across England | ✗ quantifying how deprived a small area is |
| ✓ identifying the most deprived small areas | ✗ identifying deprived people |
| ✓ exploring the domains (or types) of deprivation | ✗ saying how affluent a place is |
| ✓ comparing larger administrative areas e.g. local authorities | ✗ comparing with small areas in other UK countries |
| ✓ looking at changes in relative deprivation between iterations (i.e. changes in ranks) | ✗ measuring absolute change in deprivation over time |



The English Index of Multiple Deprivation 2019 (IMD2019)

